



Holland America

# Alaska

DENALI & THE YUKON

2025-2026 CRUISES & CRUISETOURS  
MAP & PLANNING GUIDE

#1 CRUISE LINE FOR ALASKA  
WILDLIFE & WILDERNESS TOURS

SEE MORE ALASKA GLACIERS WITH US  
THAN WITH ANY OTHER CRUISE LINE

## Top Reasons TO CRUISE ALASKA WITH HOLLAND AMERICA

- ALASKA GLACIER GUARANTEE™**  
Guests who cruise Alaska with Holland America are guaranteed to see an iconic Alaska glacier or receive a Future Cruise Credit equal to 15% of the cruise fare.
- #1 IN ALASKA WILDLIFE & WILDERNESS TOURS**  
175+ animal sanctuary and sightseeing opportunities, including the Alaska Wildlife Conservation Center's "Moose Encounter" — a Holland America exclusive.
- COMPLIMENTARY DENALI TOURS**  
Discover Denali National Park & Preserve's intriguing history, incredible wildlife, and unspoiled wilderness on one of two complimentary guided tours of the park.
- WE ♥ ALASKA™ EXPERIENCE**  
Our 360° destination programming features Alaska Up Close presentations, fresh local cuisine, and shore excursions that highlight the best of Alaska.
- FRESH LOCAL SEAFOOD**  
Holland America is the first and only cruise line to be certified for sustainable, wild-caught, and responsibly farmed Alaska seafood on board.
- LUXURY RAIL EXPERIENCE**  
Every Alaska cruisetour includes a ride through the 49th state's unspoiled wilderness on board our glass-domed McKinley Explorer® railcars.



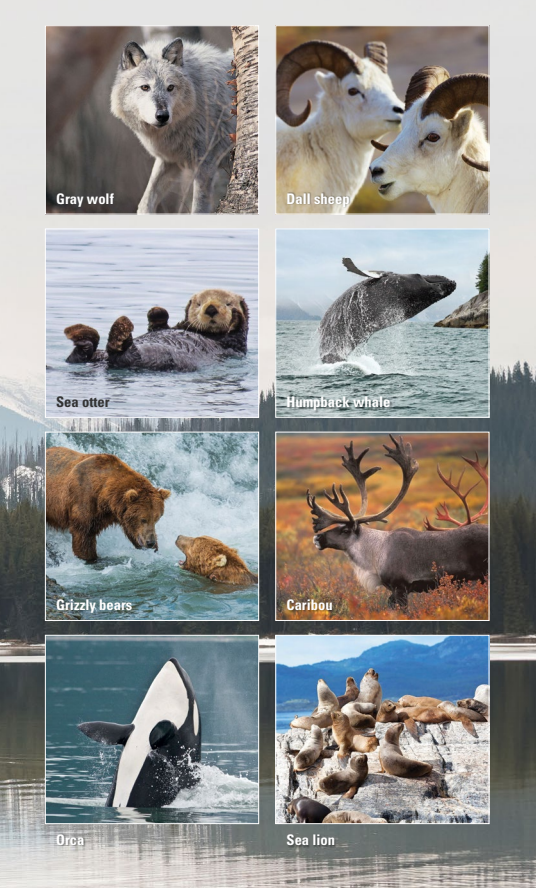
**EXCLUSIVE** HOLLAND AMERICA  
**Glacier Guarantee™**  
At Holland America, **WE ♥ ALASKA** — including its iconic glaciers. Book with confidence with our Glacier Guarantee™, knowing that you're guaranteed to see an Alaska glacier or receive a Future Cruise Credit equal to 15% of your fare.



Authorized Concessioner  
Glacier Bay National Park

## #1 CRUISE LINE FOR ALASKA WILDLIFE & WILDERNESS TOURS

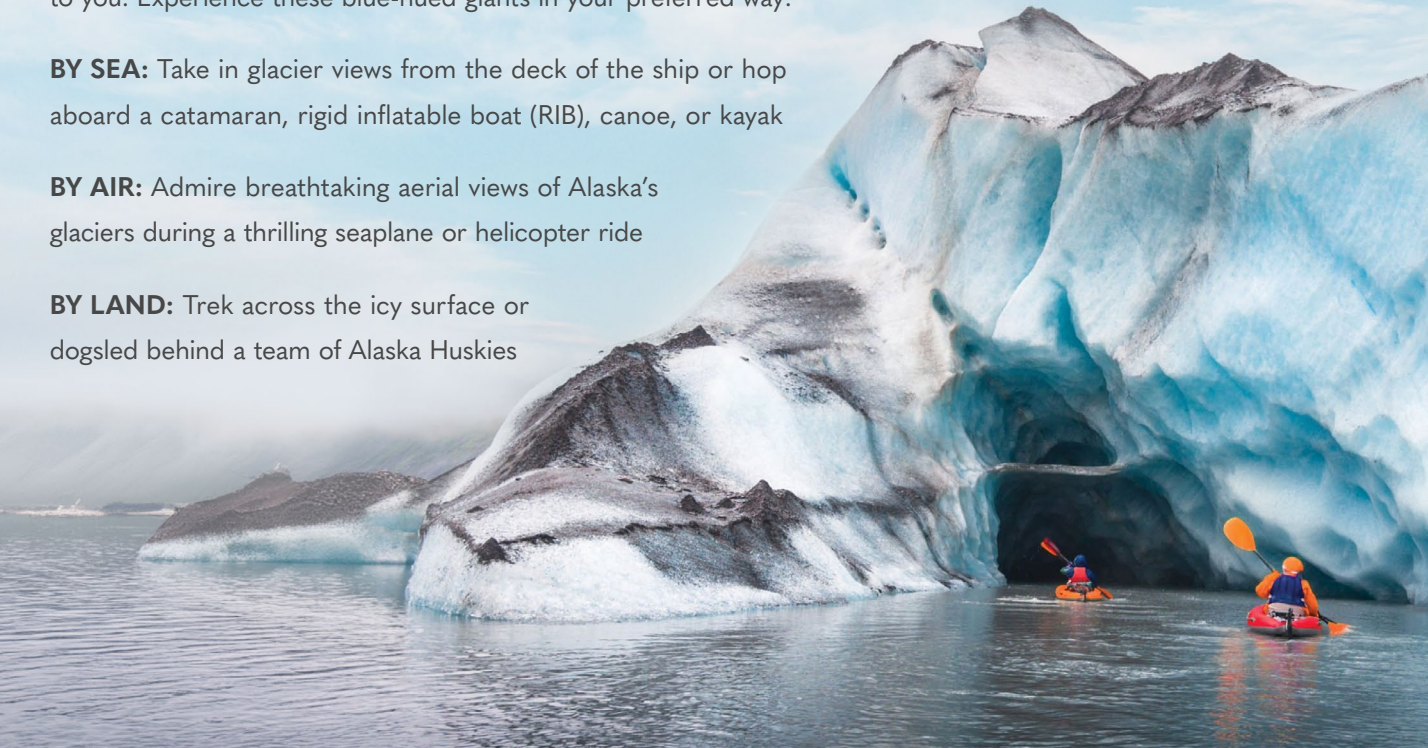
Holland America provides more access to Alaska wildlife than any other cruise line. Choose from more than 175 animal sanctuary and sightseeing opportunities, including the Alaska Wildlife Conservation Center's unique "Moose Encounter" — a Holland America exclusive.



## SEE MORE ALASKA GLACIERS WITH US THAN WITH ANY OTHER CRUISE LINE

We understand how important seeing glaciers on an Alaska cruise is to you. Experience these blue-hued giants in your preferred way:

- BY SEA:** Take in glacier views from the deck of the ship or hop aboard a catamaran, rigid inflatable boat (RIB), canoe, or kayak
- BY AIR:** Admire breathtaking aerial views of Alaska's glaciers during a thrilling seaplane or helicopter ride
- BY LAND:** Trek across the icy surface or dogsled behind a team of Alaska Huskies



## EXPERIENCE THE Best of Alaska



### ALASKA CRUISES



- 7- to 28-day itineraries
- Convenient weekend departures from Seattle and Vancouver
- Privileged access to Glacier Bay National Park & Preserve
- Onboard National Park Service Rangers, Wildlife Experts, and more
- Glacier Guarantee™: See an Alaska glacier or receive a Future Cruise Credit equal to 15% of your cruise fare

### ALASKA CRUISETOURS



- 9- to 18-day itineraries
- A land-and-sea package that brings you into the heart of Alaska's wild interior
- All cruisetours include a visit to Denali National Park & Preserve
- Exclusive access to Canada's Klondike Yukon Territory on Denali & Yukon itineraries
- Local Tour Directors providing expert assistance on Denali & Yukon itineraries
- Private glass-domed railcars and premium wilderness lodge at the gates of Denali

## ALASKA CRUISES

We've been visiting Alaska since 1947 — before it was even a state! Get ready to discover the 49th state's magnificent glaciers, incredible wildlife, and enduring frontier spirit on board perfectly sized ships built to explore the Great Land.

- **#1 IN GLACIERS** See more Alaska glaciers with Holland America than any other cruise line
- **ONBOARD EXPERTS** Learn from the best so you can get the most out of your Alaska adventure
- **PERFECTLY SIZED SHIPS** Cruise Alaska with ease and enjoy a host of dining and entertainment
- **PRIME DOCKING LOCATIONS** Less time reaching your destination, more time enjoying it
- **WE MAKE IT EASY** Unpack once and experience the best of the 49th state

14-Day GREAT ALASKA EXPLORER <i>Nieuw Amsterdam</i> , May 5, 2024														
DAY 0	1	2	3	4	5	6	7	8	9	10	11	12	13	14
Vancouver	At Sea	At Sea	Anchorage	Anchorage	Kodiak	Valdez	At Sea	Juneau	Skagway	Endicott Arm/Dawes Glacier	Wrangell	Ketchikan	Inside Passage	Disembark Vancouver

14-Day GREAT ALASKA EXPLORER <i>Noordam</i> , Sep 15, 2024														
DAY 0	1	2	3	4	5	6	7	8	9	10	11	12	13	14
Vancouver	At Sea	At Sea	Anchorage	Anchorage	Kodiak	Valdez	At Sea	Glacier Bay	Skagway	Sitka	Ketchikan	Prince Rupert	Inside Passage	Disembark Vancouver

28-Day ARCTIC CIRCLE SOLSTICE <i>Westerdam</i> , Jun 9, 2024														
DAY 0	1	2	3	4	5	6	7	8	9	10	11	12	13	14
Seattle	Inside Passage	Ketchikan	Sitka	Hubbard Glacier	Prince William College Fjord	Prince William Sound	Seward	At Sea	Dutch Harbor	At Sea	Arctic Circle/Little Diomedes Island	Nome	At Sea	At Sea
15	16	17	18	19	20	21	22	23	24	25	26	27	28	
At Sea	Kodiak	Anchorage	Anchorage	Homer	At Sea	Glacier Bay	Haines (Skagway)	Juneau	Tracy Arm	Misty Fjords	Prince Rupert	At Sea	Disembark Seattle	

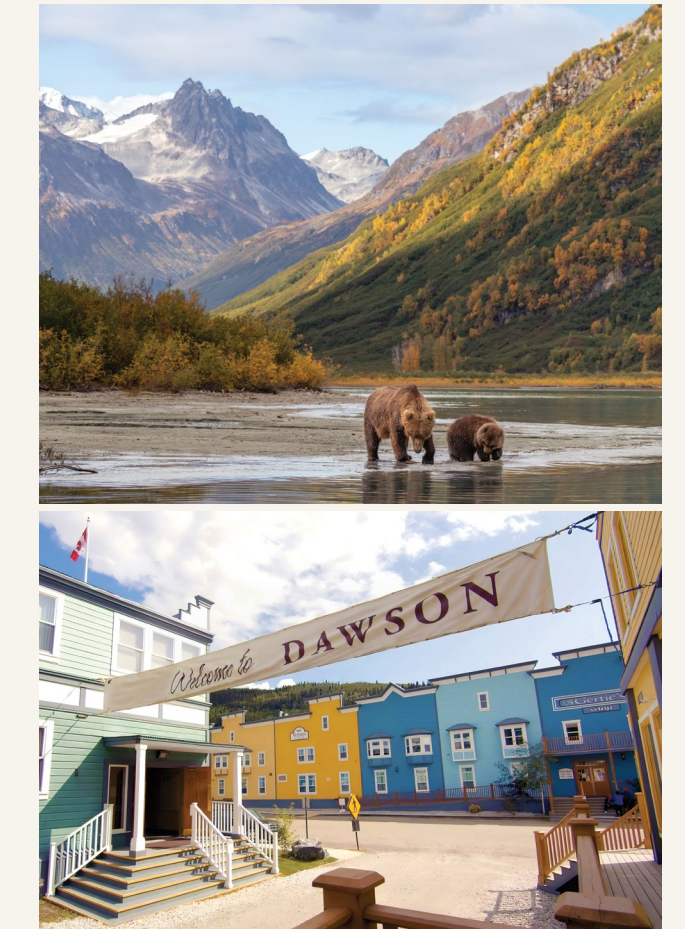
## ALASKA CRUISETOURS

Combine the best of an Alaska cruise with an unforgettable journey into the heart of the Great Land's wild, unspoiled interior.



	CLASSIC ALASKA & DENALI	SIGNATURE ALASKA & DENALI	ULTIMATE ALASKA & DENALI	ALASKA, DENALI & YUKON
WHAT WILL I SEE?	Alaska & Denali highlights	Best of Alaska & Denali	Best of Alaska & Denali + a quaint Alaska town	Best of Alaska & Denali + the Yukon Territory
WHICH CRUISE IS INCLUDED?	7-Day Glacier Discovery	7-Day Glacier Discovery	7-Day Glacier Discovery	7-Day Glacier Discovery OR 7-Day Alaska Inside Passage (3-4 nights)
HOW MANY DAYS ON LAND?	2-3	3-5	7	6-11
HOW MANY NIGHTS AT DENALI NATIONAL PARK?	1	2-3	2	2-3
WHICH "GLACIER DAYS" ARE INCLUDED?	<ul style="list-style-type: none"> <li>• Glacier Bay National Park &amp; Preserve</li> <li>• College Fjord OR Hubbard Glacier</li> </ul>	<ul style="list-style-type: none"> <li>• Glacier Bay National Park &amp; Preserve</li> <li>• College Fjord OR Hubbard Glacier</li> </ul>	<ul style="list-style-type: none"> <li>• Glacier Bay National Park &amp; Preserve</li> <li>• College Fjord OR Hubbard Glacier</li> </ul>	<ul style="list-style-type: none"> <li>• Glacier Bay National Park &amp; Preserve*</li> <li>• College Fjord OR Hubbard Glacier*</li> </ul>
IS THE MCKINLEY EXPLORER® RAILWAY INCLUDED?	Yes	Yes	Yes	Yes
WHY SHOULD I CHOOSE THIS CRUISETOUR?	Denali + the Alaska Railroad in the shortest amount of time	Signature Denali experiences + up to 3-night stays	Iconic Alaska favorites + Alyeska, Seward or Homer	Unique guided tour of Denali + visit to the Yukon Territory

\*Y1 itineraries, Y2 itineraries, and Y3. Y4, Y5, Y6 Land First, and Y7 Land First itineraries only. Y1 itineraries, Y2 itineraries, and the Y7 Land First itinerary only.



- **LUXURY RAIL EXPERIENCE** Travel in style through Alaska's untamed interior on board Holland America's privately owned McKinley Explorer® railcars
- **COMPLIMENTARY DENALI TOURS** All Alaska cruisetours include a guided tour of Denali National Park & Preserve's iconic wildlife and wilderness
- **THE YUKON EXPERIENCE** The only cruise line bringing you into the heart of Canada's Yukon Territory, escorted by our expert local guides
- **UNESCO WORLD HERITAGE SITES** All Alaska cruisetours include a visit to at least one of the state's three UNESCO World Heritage sites
- **ALASKA'S WILDLIFE ON LAND** Spot Alaska's awe-inspiring "Big 5" land animals with the cruise line that's #1 in Alaska Wildlife & Wilderness Tours



## 2025-2026 ALASKA & DENALI CRUISETOURS FEATURED ITINERARY

D5	DAY 0	1	2	3	4	5	6	7	8	9	10	11
land first	Fairbanks	Double Denali	Anchorage	Whittier	Hubbard Glacier	Glacier Bay	Skagway	Juneau	Ketchikan	Inside Passage	Disembark Vancouver	
cruise first	Vancouver	Inside Passage	Ketchikan	Juneau	Skagway	Glacier Bay	College Fjord	Anchorage	Double Denali	Fairbanks	Cruisetour Ends	

2025 D5L May 14, 21, 28, Jun 4, 11, 18, 25, Jul 2, 9, 16, 23, 30, Aug 6, 13, 20, 27, Sep 3, 10  
D5C May 11, 18, 25, Jun 1, 8, 15, 22, 29, Jul 6, 13, 20, 27, Aug 3, 10, 17, 24, 31, Sep 7

2026 D5L May 13, 20, 27, Jun 3, 10, 17, 24, Jul 1, 8, 15, 22, 29, Aug 5, 12, 19, 26, Sep 2, 9  
D5C May 10, 17, 24, 31, Jun 6, 13, 20, 27, Aug 3, 10, 17, 24, 31, Sep 7

## 2025-2026 ALASKA, DENALI & YUKON CRUISETOURS FEATURED ITINERARY

Y3	DAY 0	1	2	3	4	5	6	7	8	9	10	11	12	13	14
land first	Anchorage	Triple Denali	Fairbanks	Dawson	Whitehorse	Skagway	Glacier Bay	Ketchikan	Inside Passage	Disembark Vancouver					
cruise first	Vancouver	Inside Passage	Juneau	Skagway	Whitehorse	Dawson	Fairbanks	Triple Denali	Anchorage	Cruisetour Ends					

2025 Y3L May 14, 17, 21, 24, 28, 31, Jun 4, 7, 11, 14, 18, 21, 25, 28, Jul 2, 5, 9, 12, 16, 19, 23, 26, 30, Aug 2, 6, 9, 13, 16, 20, 23, Jul 1, 4, 8, 11, 15, 18, 22, 25, 29, Aug 1, 5, 8, 12, 15, 19, 22

2026 Y3L May 13, 16, 20, 23, 27, 30, Jun 3, 6, 10, 13, 17, 20, 24, 27, Jul 1, 4, 8, 11, 15, 18, 22, 25, 29, Aug 1, 5, 8, 12, 15, 19, 22

Y3C May 21, 24, 28, 31, Jun 4, 7, 11, 14, 18, 21, 25, 28, Jul 2, 5, 9, 12, 16, 19, 23, 26, 30, Aug 2, 6, 9, 13, 16, 20, 23, 27, 30

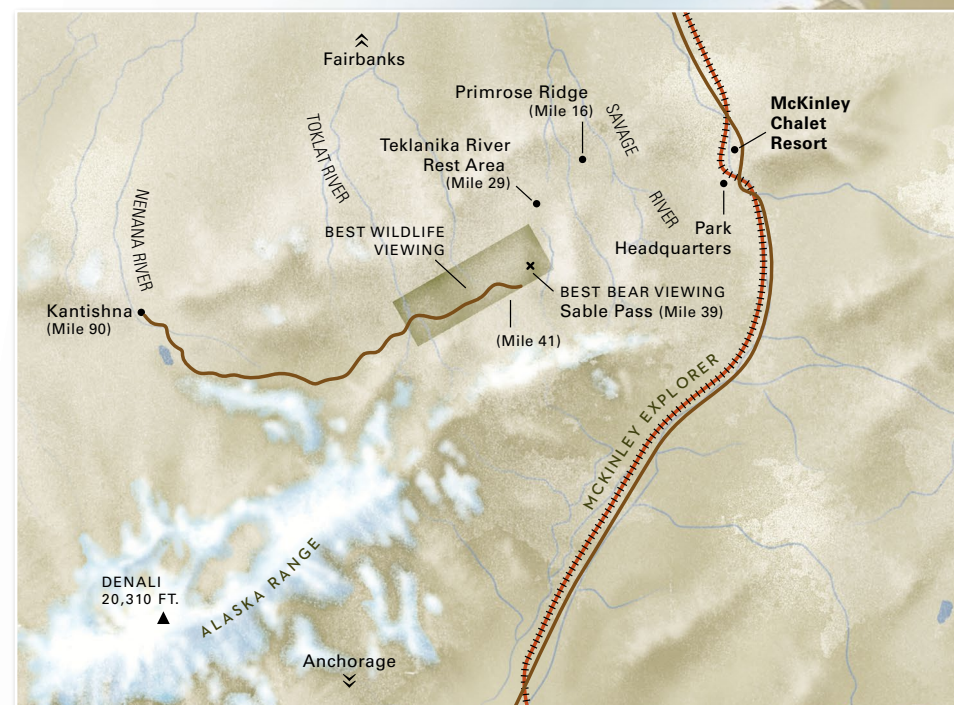
Y3C May 23, 30, Jun 6, 13, 20, 27, Jul 4, 11, 18, 25, Aug 1, 8, 15, 22, 29



PREMIER  
**Denali Experience**

Embark on a luxury train ride through Alaska's interior aboard our glass-domed McKinley Explorer® railcars. Your destination? Holland America Denali Lodge — your 60-acre base camp for adventures in the park and your home for the next 1-3 nights.

Arrive to newly renovated rooms, breathtaking views, and easy access to bustling Denali Square™ — the perfect place to tuck into celebratory meals, shop for handcrafted local goods, enjoy lively entertainment, and swap tales around an outdoor firepit.



**DENALI NATIONAL PARK & PRESERVE**  
Our Alaska cruisetours bring you to the gates of Denali National Park & Preserve. Paddle down the Nenana River; maneuver an all-terrain vehicle through untouched wilderness; spot Alaska's "Big 5" land animals (bears, moose, Dall sheep, caribou, and gray wolves) on the *Tundra Wilderness Tour* (included on all 2- and 3-night stays at Holland America Denali Lodge), or discover the park's cultural and ecological heritage on the *Denali Natural History Tour* (included on all 1-night stays at Holland America Denali Lodge).



**DISCOVER THE YUKON**  
Embark on a safe and secure adventure off the beaten path with the only cruise line offering up to three nights in the heart of the untamed Yukon Territory. Once the epicenter of the Klondike Gold Rush, Dawson City boasts a colorful history as well as a picturesque setting at the confluence of the Klondike and Yukon Rivers. Trace the path of prospectors and admire the Yukon's rugged natural beauty on board the White Pass & Yukon Route Railway while accompanied by your expert local Tour Director.



2025 & 2026 CRUISETOURS  
**Features & Dining Plans**

**GREAT LAND DINING PLANS**  
Relax and focus all your attention on Alaska & the Yukon's spectacular sights, awe-inspiring wildlife, and historic outposts, knowing that most of your meals — including gratuities — have been pre-planned and paid for with our Great Land Dining Plan. Available on cruisetours only, this plan offers a breakfast only, Denali, or full option for you.



CRUISETOUR FEATURES	D1	D2	D3	D4	D5	D6	D7	D8	D9	D0	DH	Y1	Y2	Y3	Y4	Y5	Y6	Y7	
<b>GLACIER BAY NATIONAL PARK &amp; PRESERVE</b> Full day of scenic cruising and glacier watching	✓	✓	✓	✓	✓	✓	✓	✓	✓	✓	✓	✓	✓	✓	✓	✓	✓	✓	✓
<b>MCKINLEY EXPLORER®</b> Premium glass-domed railcars between Anchorage and Denali	✓	✓	✓	✓	✓	✓	✓	✓	✓	✓	✓	✓	✓	✓	✓	✓	✓	✓	✓
<b>TUNDRA WILDERNESS TOUR (S)</b> 5- to 6-hour wildlife-spotting adventure deep into Denali	✓	✓	✓	✓	✓	✓	✓	✓	✓	✓	✓	✓	✓	✓	✓	✓	✓	✓	✓
<b>DENALI NATURAL HISTORY TOUR</b> 4½- to 5-hour tour of Denali's cultural and natural history	✓	✓	✓	✓	✓	✓	✓	✓	✓	✓	✓	✓	✓	✓	✓	✓	✓	✓	✓
<b>TOUR DIRECTOR</b> Expert narration and travel coordination on land	✓	✓	✓	✓	✓	✓	✓	✓	✓	✓	✓	✓	✓	✓	✓	✓	✓	✓	✓
<b>RIVERBOAT DISCOVERY (L) IN FAIRBANKS</b> Cruise the Alaska interior on an authentic sternwheeler	✓	✓	✓	✓	✓	✓	✓	✓	✓	✓	✓	✓	✓	✓	✓	✓	✓	✓	✓
<b>GOLD DREDGE 8 IN FAIRBANKS</b> Pan for gold at an actual mining camp	✓	✓	✓	✓	✓	✓	✓	✓	✓	✓	✓	✓	✓	✓	✓	✓	✓	✓	✓
<b>WHITE PASS &amp; YUKON ROUTE RAILWAY</b> Spectacular mountain ride on a narrow-gauge train	✓	✓	✓	✓	✓	✓	✓	✓	✓	✓	✓	✓	✓	✓	✓	✓	✓	✓	✓
<b>KLONDIKE GOLD TOUR</b> Visit the historic site that triggered the Klondike Gold Rush	✓	✓	✓	✓	✓	✓	✓	✓	✓	✓	✓	✓	✓	✓	✓	✓	✓	✓	✓
<b>DIRECT TO DENALI (No overnight in Anchorage)</b> Go directly between the ship and Denali		R					M					R	R	R					✓
<b>DIRECT RAIL TO THE SHIP</b> Follow Alaska's dramatic coastline by rail	✓	✓	✓	✓	✓	✓	✓	✓	✓	✓	✓	✓	✓	✓	✓	✓	✓	✓	✓
<b>PORTAGE GLACIER</b> View Ice Age-era icebergs from just 300 yards away					P	✓	✓	✓	✓	✓	✓	✓	✓	✓	✓	✓	✓	✓	U
<b>HOLLAND AMERICA DENALI LODGE DENALI SUITES</b> Spacious balcony, larger living area & enhanced amenities	U	U	U	U	U	U	U	U	U	U	U	U	U	U	U	U	U	U	U
<b>SEATTLE CRUISETOUR CONNECTOR</b> Make your cruisetour roundtrip from Seattle	✓	✓	✓	✓	✓	✓	✓	✓	✓	✓	✓	✓	✓	✓	✓	✓	✓	✓	✓

L = Lunch included, S = Snack included, full lunch upgrade available; U = Upgrade, P = Pre-Post additional excursion; CF = Cruise First cruisetours only; LF = Land First cruisetours only; R = McKinley Explorer railway between the ship and Denali; M = Luxury motorcoach with included lunch between the ship and Denali; \* In lieu of Glacier Bay, 13-16 Cruise First cruisetours offer an OPTIONAL excursion to Tracy Arm and the twin Sawyer Glaciers. \*2025 itineraries only.

**Luxury Rail EXPERIENCE**

- **LUXURY TRAIN JOURNEY** All cruisetours include a ride on our McKinley Explorer® railcars
- **PANORAMIC EXPERIENCE** Take in vistas of Hurricane Gulch, Broad Pass, and more
- **ELEGANT DINING** Savor regional cuisine in the charming, elegantly appointed dining car
- **OPEN-AIR PLATFORM** Breathe in crisp mountain air and enjoy unobstructed views
- **SCENIC COMMENTARY** Hear engaging stories and insights from our expert guides



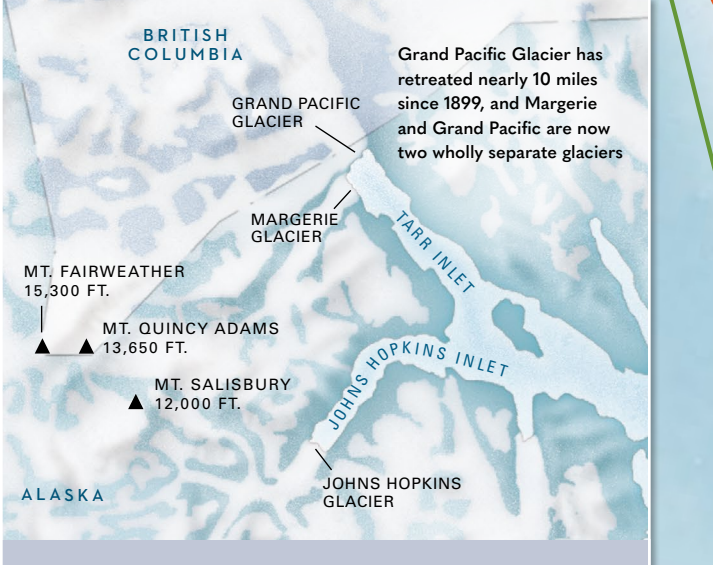
**Have it all.**  
Our best amenities included in your fare

Save up to 50% on top amenities by choosing the Have It All fare option! With more value and convenience, we make it easy to save big on Specialty Dining, Shore Excursions, the Signature Beverage Package, and Surf Wi-Fi. All your favorite extras at one simple price — who says you can't Have It All?

**VISIT ALASKA'S NATIONAL PARKS**

Of the United States' 10 largest national parks, seven can be found in the nation's largest state. Below are four spectacular national parks you can witness for yourself when you embark on an epic Alaska journey with Holland America.

- DENALI NATIONAL PARK & PRESERVE**  
Denali's 6 million acres are where you'll find diverse wildlife, imposing landscapes, and the highest mountain peak in all of North America.
- GLACIER BAY NATIONAL PARK & PRESERVE**  
One of the world's largest internationally protected biosphere reserves, Glacier Bay is home to majesty best experienced by sea.
- KENAI FJORDS NATIONAL PARK**  
Alaska's smallest national park at 1,047 square miles, Kenai Fjords boasts cascading glaciers, lush waterfalls, rugged fjords, and active wildlife.
- WRANGELL-ST. ELIAS NATIONAL PARK**  
At 13.2 million acres, Wrangell-St. Elias National Park has more than earned its nickname, "The Mountain Kingdom of North America."



**GLACIER BAY NATIONAL PARK & PRESERVE**  
Glacier Bay National Park & Preserve is home to snowcapped 15,000+ foot mountain ranges, coastal beaches with protected coves, coastal and estuarine waters, glacier-carved fjords, freshwater lakes, and tidewater glaciers. These diverse habitats provide ideal conditions for wildlife viewing and support a variety of species, including seabirds and marine and terrestrial mammals. For more details, visit [NPS.gov/gbpa](http://NPS.gov/gbpa).



**MAP LEGEND**

- 7-Day Alaska Inside Passage Cruises
- 7-Day Glacier Discovery Cruises
- 7-Day Alaska Explorer Cruises
- 14-Day Great Alaska Explorer Cruises
- 28-Day Arctic Circle Solstice Cruise
- Land Routes
- Flight Routes
- McKinley Explorer® Railway
- White Pass & Yukon Route Railway
- Cruisetrain

**ENLARGED AREA SHOWN**

